

The X-Guide system takes center stage as navigation booms

Consider it a GPS for your handpiece

By X-Nav Technologies Staff

■ There is new navigation technology to talk about here at the AAP Annual Meeting. The X-Guide system by X-Nav Technologies is, according to the company, a dynamic navigation surgical system that gives you the ability to achieve more accurate placement of implants right in your office. Interactive, turn-by-turn guidance during live surgery gives you the ability to control the exact position, angle and depth — like a GPS for your handpiece.

According to Dr. Sean Healy of Santa Fe, N.M.: "I would say that the X-Guide just makes me a better implant surgeon. I know where the implant is going at all times; I am not worried about the 'what ifs.' I highly recommend this to anyone placing implants. Besides a cone-beam CT, this may be the second most important machine to have in the office."

The X-Guide system features patented technology that makes learning and integrating navigation technology easy. It is important to note that with this system, the surgeon concentrates on a single target to assist in precisely guiding the implant. The result: They consistently achieve a more desirable, functional and esthetic outcome, according to the company.

Navigation technology

Lately, according to the company, the X-Guide system has gathered a lot of attention as an industry-leading navigation system from surgeons, key opinion leaders, speakers, dental journals and associations.

A new study being published by the Journal of Oral Implantology (JOI) touts the clinical accuracy of the X-Guide navigation system.

Both static and dynamic image navigation provide increased accuracy over freehand, according to the company. With the X-Guide in-office navigation system, increased accuracy is now immediate. Same-day guided surgery can be a reality for more patients. There are no additional processing or shipping delays that are common in the static guide process — and it's now available at a fraction of the cost of traditional guides.

New literature affirms accuracy of X-Guide dynamic navigation

The model-based study appearing in JOI was used to determine the



• A clinician uses the X-Guide navigation system. The green circle on the screen means you are almost there. (Photos/Provided by X-Nav Technologies)

Here in San Diego

To check out the X-Guide system, stop by the X-Nav booth, No. 706.

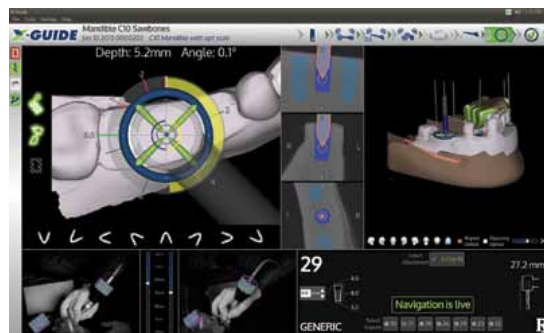
accuracy of placing dental implants using the X-Guide dynamic navigation system. The study focused on measurements of the overall accuracy of implant placement relative to the virtual plan. It also compared accuracy of static guides, implants placed freehand and other navigation systems on the market.

The results show the 3-D angular accuracy of the X-Guide system is approximately 11 times better than freehand, and 2-D lateral positional accuracy is approximately eight times better than freehand.

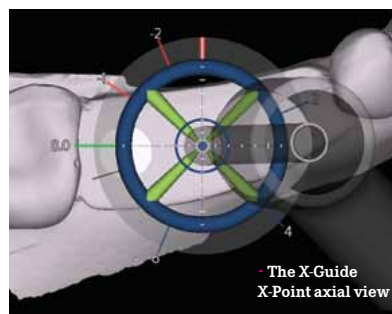
Give it a try

Stop by the X-Nav booth, No. 706, to learn more. Also, be sure to check out the new published literature and studies and see the company's new implant-planning software features. You won't want to miss this!

In addition, there is also a lot of information available on the company's website at www.X-NavTech.com.



• The yellow circle indicates the halfway mark.



• The X-Guide X-Point axial view



• The X-Guide